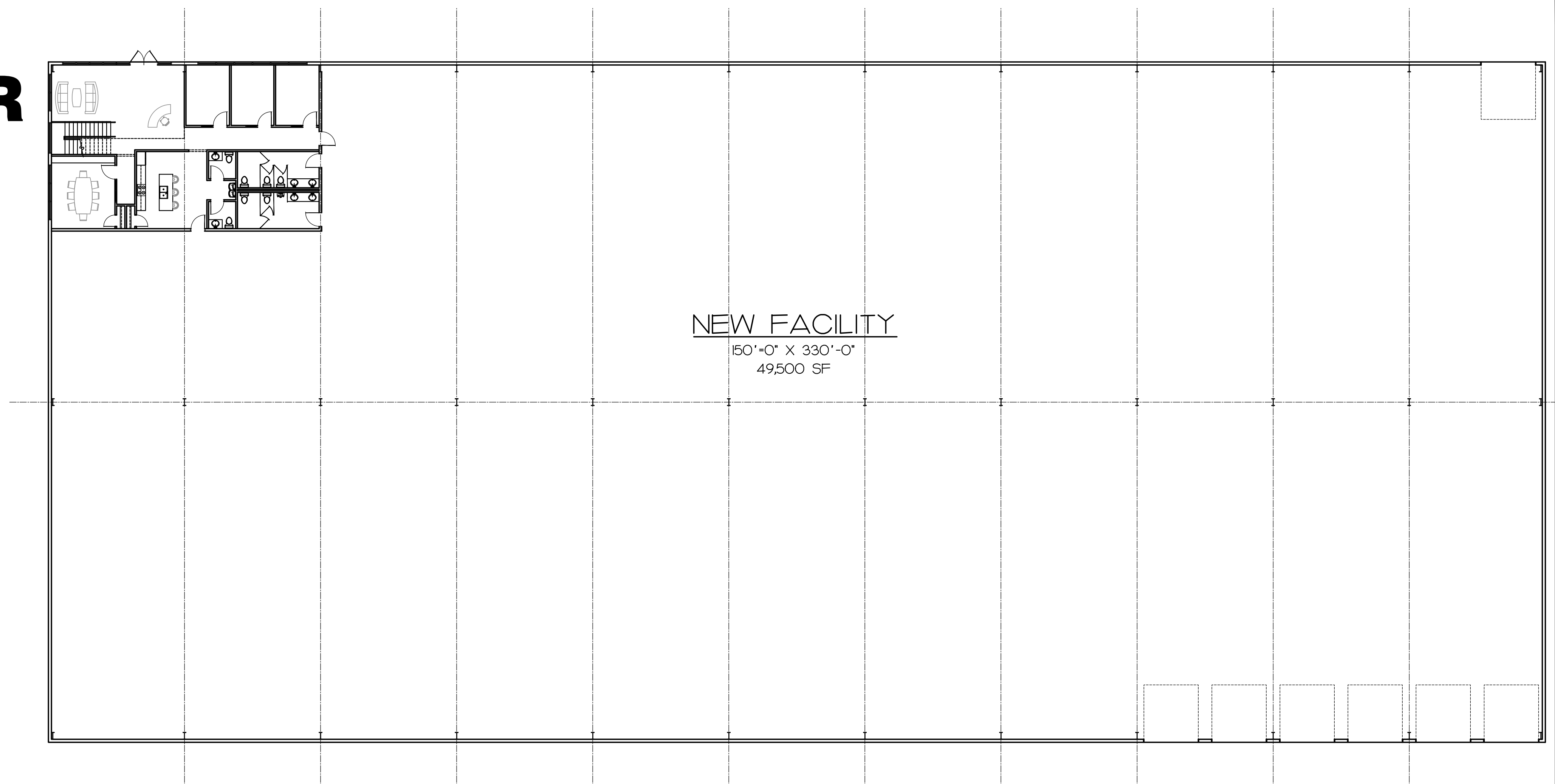


NEW VIRTUAL SHELL BUILDING FOR ST. JOSEPH CHAMBER OF COMMERCE 3200 TOWNSOUTH COURT ST. JOSEPH, MISSOURI 64503

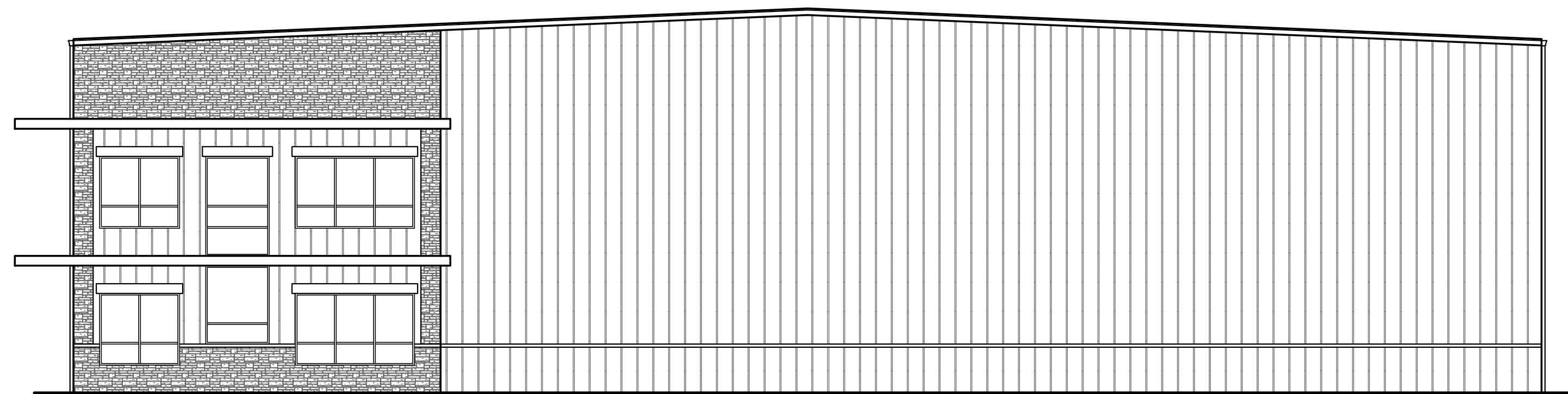


VICINITY MAP
NOT TO SCALE

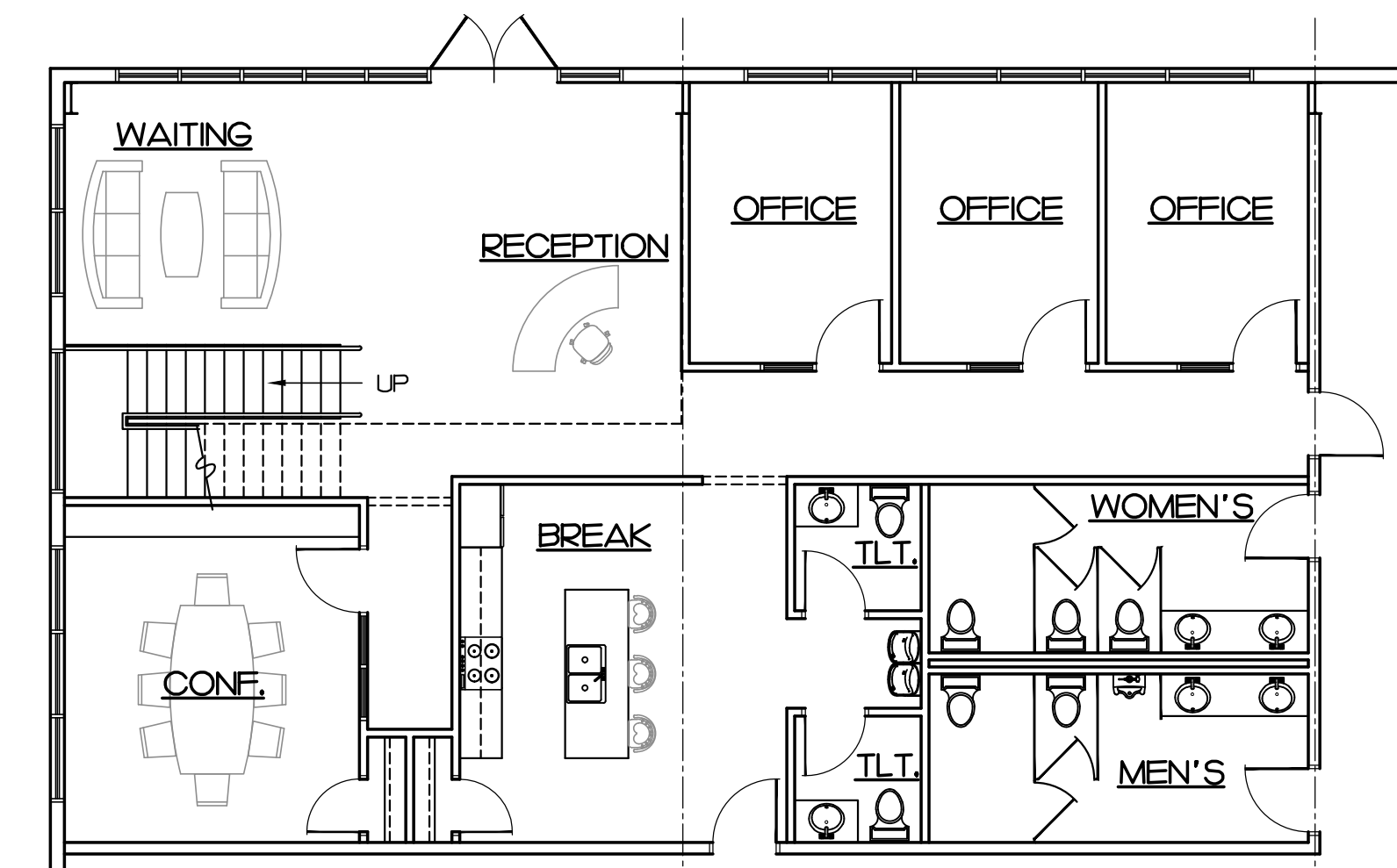


NEW FACILITY
150'-0" X 330'-0"
49,500 SF

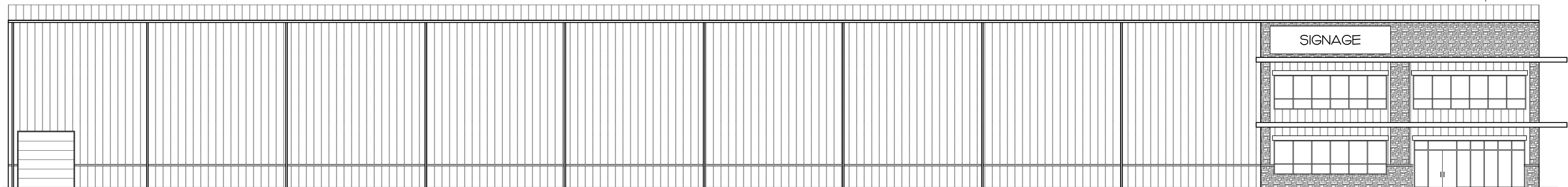
FLOOR PLAN
1/16" = 1'-0"



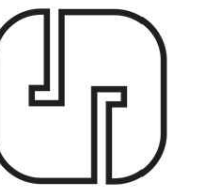
NORTH ELEVATION
3/32" = 1'-0"



FIRST FLOOR OFFICE PLAN
1/8" = 1'-0"



EAST ELEVATION
3/32" = 1'-0"



SNYDER & ASSOCIATES
Engineers and Planners



St. Joseph, Mo.



BERKSHIRE HATHAWAY
HomeServices
Stein & Summers Real Estate

CREAL CLARK & SEIFERT
ARCHITECT / ENGINEERS, INC.
919 Corby Street • Saint Joseph, Missouri 64501
Phone: 816-364-2435 • Fax: 816-364-1273

PROJECT NUMBER:

16-166

SHEET NUMBER:

CVR