

2295 175TH RD

WATHENA, KANSAS 66090
(ST. JOSEPH, MO MSA)

Vernon Road Business Park



LARGE PARCEL IN WATHENA, KS
IDEAL FOR LIGHT MANUFACTURING AND WAREHOUSING
LEVEL, TILLABLE

FOR SALE

\$75,000 PER ACRE*

85 acres MOL currently zoned Industrial parcel in Wathena, KS, part of St. Joseph, MO metropolitan statistical area (MSA). Ideal for light manufacturing and warehousing. Adjacent to other light manufacturing facilities. Historically used for farming, land is level and within City Limits in Vernon Road Business Park outside of the flood plain. Served by an interchange off of US Highway 36, and minutes from I-29. 45 minutes north of Kansas City International Airport.

85 +/- acres

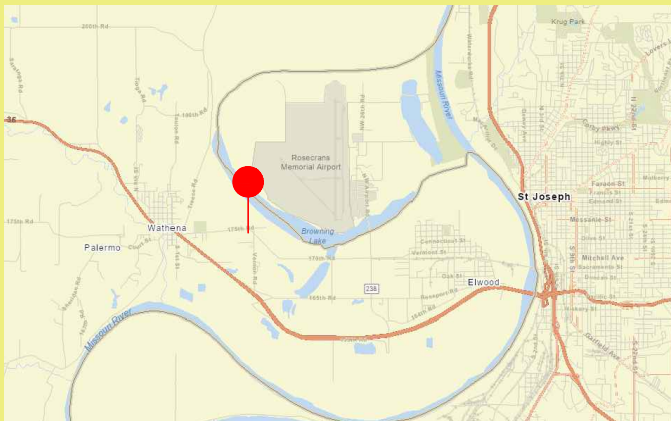
Can be subdivided

10" City Water Line

City Sewer Available

Every Electric

Kansas Gas



For Contact Information Only:

Tammy Bembrick

City Clerk

City of Wathena

Office: 785-989-4711

Email: tcbembrick@rainbowtel.net

** Price negotiable and economic incentives available for projects creating local capital investment and quality jobs. Brochure for informational purposes only. Price subject to change without notice.*